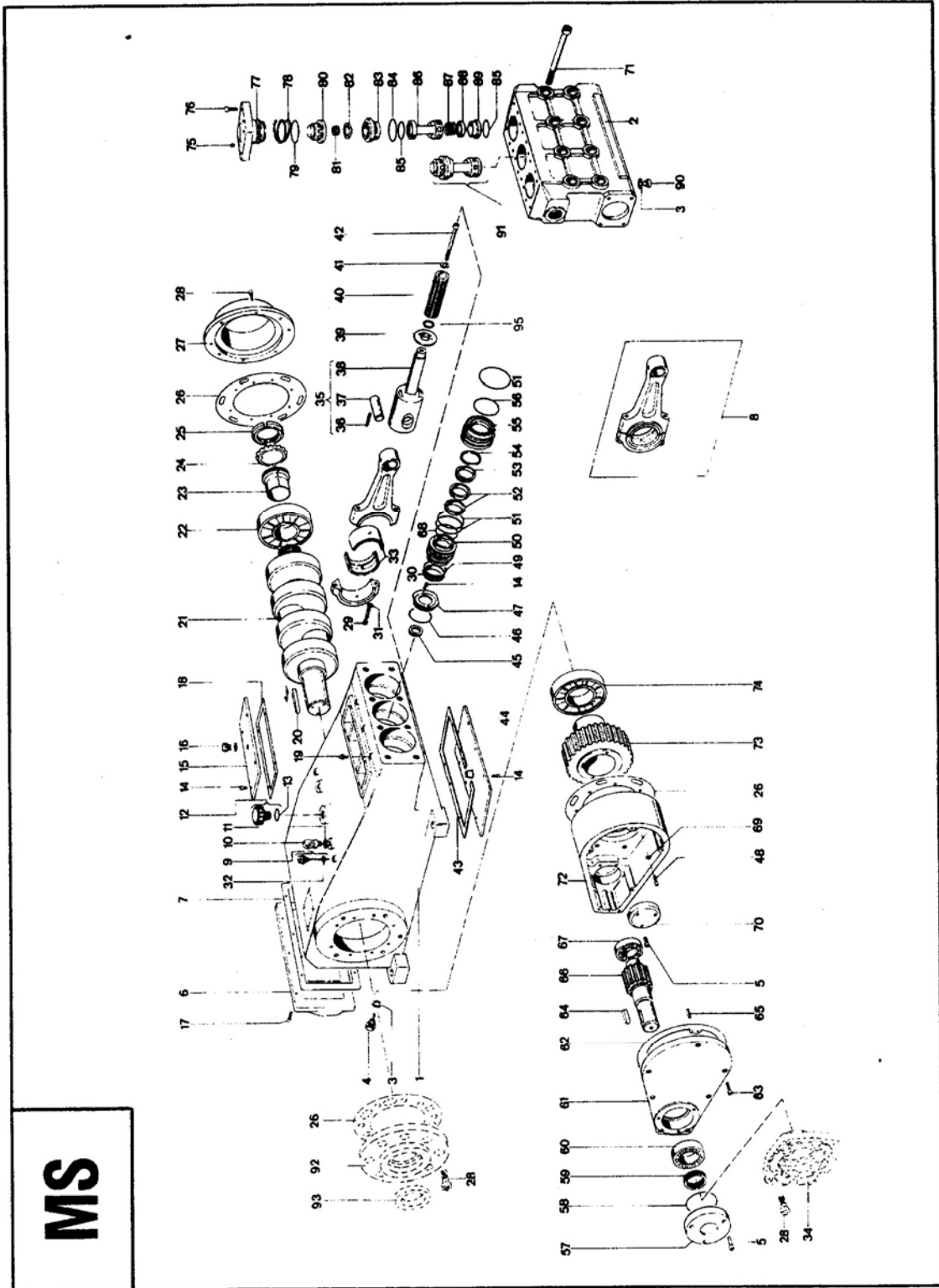
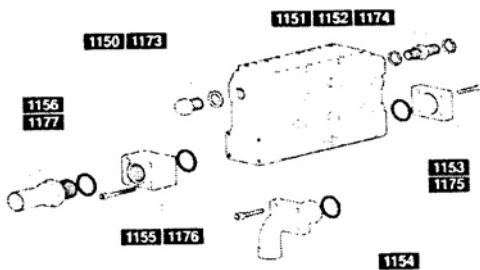


**16. Reservedelstegning:**


## 18. Reservedelspakke:

| Reservedele - KIT til MS |   | Versioner |          |          |          |          |
|--------------------------|---|-----------|----------|----------|----------|----------|
|                          | Positioner                                    | MS 36     | MS 40    | MS 45    | MS 50    | MS 55    |
| <b>A</b>                 | 66-68-90-92-96-97-99-100                      | KIT 1134  | KIT 1135 | KIT 1136 | KIT 1137 | KIT 1138 |
| <b>B</b>                 | 37-74-75-80-81                                | KIT 1139  |          |          |          |          |
|                          | 2-13-14-17-22-28-35-37-40-42-46-49-54-57-60   |           |          |          |          |          |
| <b>C</b>                 | 62-63-66-68-74-75-80-81-86-91-92-96-97-99-100 | KIT 1140  | KIT 1141 | KIT 1142 | KIT 1143 | KIT 1144 |

## 19. Anbefalede påmonteringsdele:



| KIT Nr. | Anvendelse                 | Størrelse | Antal |
|---------|----------------------------|-----------|-------|
| 1150    | Dæksel til trykside        | G 1 1/4"  | 1     |
| 1151    | Tilslutningsstuds trykside | aG 1 1/2" | 1     |
| 1152    | Tilslutningsstuds trykside | aG 1 1/4" | 1     |
| 1153    | Dæksel til sugeside        |           | 1     |
| 1154    | Armatur sugeside 90        | ø 76 mm   | 1     |
| 1155    | Tilslutningsstuds sugeside | iG 2 1/2" | 1     |
| 1156    | Armatur sugeside           | ø 76 mm   | 1     |

### 19.1 Specielt ekstraudstyr:



| Del nr.     | Benævnelse       | Antal |
|-------------|------------------|-------|
| 2080.0692.0 | Ventilhævert sæt | 1     |

**17.2 Stykliste Pos. 66-100:**

| Pos. | Teilnummer  | Kit   | Benennung                   | Stück |
|------|-------------|-------|-----------------------------|-------|
| 66   | 8810.1211.5 | A - C | O - Ring                    | 3     |
| 67   | 0242.0034.0 |       | Plunger MS 36               | 3     |
| 67   | 0242.0035.0 |       | Plunger MS 40               | 3     |
| 67   | 0242.0036.0 |       | Plunger MS 45               | 3     |
| 67   | 0242.0037.0 |       | Plunger MS 50               | 3     |
| 67   | 0242.0038.0 |       | Plunger MS 55               | 3     |
| 68   | 8720.4000.4 | A - C | Dichtring                   | 3     |
| 69   | 8711.3551.6 |       | Plungerschraube MS 36-40-45 | 3     |
| 69   | 8711.3551.0 |       | Plungerschraube MS 50-55    | 3     |
| 70   | 2080.0504.0 |       | Ventil, komplett            | 3     |
| 71   | 8712.4535.8 |       | Schraube                    | 6     |
| 72   | 8711.3510.3 |       | Schraube                    | 12    |
| 73   | 0631.0011.0 |       | Ventildeckel                | 3     |
| 74   | 8811.1200.2 | B - C | Backring                    | 3     |
| 75   | 8810.1021.9 | B - C | O - Ring                    | 3     |
| 76   | 0213.0011.0 |       | Ventilführung               | 3     |
| 77   | 0902.0009.0 |       | Ventilfeder                 | 3     |
| 78   | 0822.0011.0 |       | Ventilteller                | 3     |
| 79   | 0812.0013.0 |       | Ventilsitz                  | 3     |
| 80   | 8810.1116.6 | B - C | O - Ring                    | 3     |
| 81   | 8810.1115.9 | B - C | O - Ring                    | 6     |
| 82   | 0213.0009.0 |       | Ventilführung               | 3     |
| 83   | 0902.0008.0 |       | Ventilfeder                 | 3     |
| 84   | 0822.0010.0 |       | Ventilteller                | 3     |
| 85   | 0812.0012.0 |       | Ventilsitz                  | 3     |
| 86   | 8720.4130.0 | C     | Dichtring                   | 5     |
| 87   | 8212.0105.1 |       | Verschlußstopfen            | 5     |
| 88   | 8711.4512.0 |       | Schraube                    | 8     |
| 89   | 0641.0026.0 |       | Pumpenkopf                  | 1     |
| 90   | 0840.0001.0 |       | Verschlußstopfen            | 3     |
| 91   | 8810.1105.2 | A - C | O - Ring                    | 9     |
| 92   | 8810.1116.4 | A - C | O - Ring                    | 3     |
| 93   | 0622.0022.0 |       | Laufbuchse MS 36 - 40       | 3     |
| 93   | 0622.0023.0 |       | Laufbuchse MS 45            | 3     |
| 93   | 0622.0024.0 |       | Laufbuchse MS 50            | 3     |
| 93   | 0622.0025.0 |       | Laufbuchse MS 55            | 3     |
| 94   | 0313.0002.0 |       | Scheibe MS 36 - 40          | 3     |
| 94   | 0313.0005.0 |       | Scheibe MS 45               | 3     |
| 94   | 0313.0006.0 |       | Scheibe MS 50               | 3     |
| 94   | 0313.0014.0 |       | Scheibe MS 55               | 3     |
| 95   | 0312.0009.0 |       | Haltering MS 36             | 3     |
| 95   | 0312.0010.0 |       | Haltering MS 40             | 3     |
| 95   | 0312.0011.0 |       | Haltering MS 45             | 3     |
| 95   | 0312.0021.0 |       | Haltering MS 50             | 3     |
| 95   | 0312.0022.0 |       | Haltering MS 55             | 3     |
| 96   | 8810.2001.0 | A - C | Manschette MS 36            | 6     |
| 96   | 8810.2001.1 | A - C | Manschette MS 40            | 6     |
| 96   | 8810.2001.2 | A - C | Manschette MS 45            | 6     |
| 96   | 8810.2001.4 | A - C | Manschette MS 50            | 6     |
| 96   | 8810.2001.5 | A - C | Manschette MS 55            | 6     |
| 97   | 8810.1116.1 | A - C | O - Ring MS 36 - 40         | 3     |
| 97   | 8810.1116.3 | A - C | O - Ring MS 45              | 3     |
| 97   | 8810.1116.5 | A - C | O - Ring MS 50              | 3     |
| 97   | 8810.1116.7 | A - C | O - Ring MS 55              | 3     |
| 98   | 0223.0034.0 |       | Druckring MS 36             | 3     |
| 98   | 0223.0035.0 |       | Druckring MS 40             | 3     |
| 98   | 0223.0036.0 |       | Druckring MS 45             | 3     |
| 98   | 0223.0037.0 |       | Druckring MS 50             | 3     |
| 98   | 0223.0038.0 |       | Druckring MS 55             | 3     |
| 99   | 8810.1012.7 | A - C | O - Ring MS 36-40-45-50     | 3     |
| 99   | 8810.1001.4 | A - C | O - Ring MS 55              | 3     |
| 100  | 8810.6101.4 | A - C | Abstreifring MS 36          | 3     |
| 100  | 8810.6101.5 | A - C | Abstreifring MS 40          | 3     |
| 100  | 8810.6101.7 | A - C | Abstreifring MS 45          | 3     |
| 100  | 8810.6101.8 | A - C | Abstreifring MS 50          | 3     |
| 100  | 8810.6101.9 | A - C | Abstreifring MS 55          | 3     |

**17. Reservedelsliste:**
**17.1 Styklister Pos. 1-65:**

| Pos. | Teilenummer | Kit | Benennung                         | Stück   |
|------|-------------|-----|-----------------------------------|---------|
| 1    | 0601.0024.0 |     | Anbaugetriebe                     | 1       |
| 2    | 8720.4700.5 | C   | Sicherungsring                    | 8       |
| 3    | 8711.2510.8 |     | Schraube                          | 8       |
| 4    | 0502.0010.0 |     | Zahnkranz 1500 U/min. (Z-55)      | 1       |
| 4    | 0502.0012.0 |     | Zahnkranz 1800 U/min. (Z-58)      | 1       |
| 5    | 0300.0009.0 |     | Deckel                            | 1       |
| 6    | 8711.2510.5 |     | Schraube                          | 3       |
| 7    | 8721.2600.4 |     | Stift                             | 2       |
| 8    | 8711.2511.0 |     | Schraube                          | 7       |
| 9    | 0101.0010.0 |     | Flansch                           | 1       |
| 10   | 8711.2515.4 |     | Schraube                          | 8-14-16 |
| 11   | 8711.2515.3 |     | Schraube                          | 3       |
| 12   | 0631.0019.0 |     | Flansch                           | 1       |
| 13   | 8810.1013.1 | C   | O - Ring                          | 1       |
| 14   | 8810.8002.6 | C   | Olabdichtring                     | 1       |
| 15   | 8111.1001.0 |     | Zylinderrollenlager               | 1       |
| 16   | 0631.0015.0 |     | Anbaugetriebedeckel               | 1       |
| 17   | 0806.0014.0 | C   | Dichtung                          | 1       |
| 18   | 8720.9700.9 |     | Paßfeder                          | 1       |
| 18   | 8720.9701.3 |     | Paßfeder                          | 1       |
| 19   | 0520.0011.0 |     | Ritzelwelle 1500 U/min. (Z-27)    | 1       |
| 19   | 0520.0013.0 |     | Ritzelwelle 1800 U/min. (Z-24)    | 1       |
| 19   | 0520.0018.0 |     | Ritzelwelle 1500 U/min. (Z-27) 48 | 1       |
| 19   | 0520.0021.0 |     | Ritzelwelle 1800 U/min. (Z-24) 48 | 1       |
| 20   | 8111.0000.2 |     | Zylinderrollenlager               | 1       |
| 21   | 8120.0000.1 |     | Lagerschalenpaar                  | 3       |
| 22   | 8720.4600.6 | C   | Sicherungsring                    | 6       |
| 23   | 0350.0007.0 |     | Pleuelschraube                    | 6       |
| 26   | 8711.1510.2 |     | Schraube                          | 16      |
| 27   | 0400.0007.0 |     | Verschlußdeckel                   | 1       |
| 28   | 0806.0013.0 | C   | Dichtung                          | 1       |
| 29   | 0601.0022.0 |     | Triebwerksgehäuse                 | 1       |
| 30   | 0340.0001.0 |     | Schraube                          | 1       |
| 31   | 8111.1001.8 |     | Pendelrollenlager                 | 1       |
| 32   | 0634.0064.0 |     | Wellendichtring                   | 1       |
| 33   | 8810.8003.2 |     | Lagerdeckel                       | 1       |
| 35   | 0806.0011.0 | C   | Dichtung                          |         |
| 36   | 8010.5700.2 |     | Magnet - Verschlußstopfen         | 1       |
| 37   | 8720.4300.2 | B-C | Dichtring                         | 4       |
| 38   | 0634.0054.0 |     | Gehäusedeckel                     | 1       |
| 39   | 8711.2110.3 |     | Schraube                          | 6       |
| 40   | 0806.0010.0 | C   | Dichtung                          | 1       |
| 41   | 0010.0001.0 |     | Öl - Meßstab                      | 2       |
| 42   | 8720.4150.1 | C   | Dichtung                          | 2       |
| 43   | 8720.2600.3 |     | Ringschraube                      | 2       |
| 44   | 0300.0003.0 |     | Dichtscheibe                      | 2       |
| 45   | 8010.5402.7 |     | Luftfilter                        | 1       |
| 46   | 8810.1011.6 | C   | O - Ring                          | 1       |
| 47   | 8010.5600.2 |     | Luftfilter                        | 1       |
| 48   | 0400.0005.0 |     | Laternendeckel                    | 1       |
| 49   | 0806.0012.0 | C   | Dichtung                          | 1       |
| 50   | 8721.0000.5 |     | Paßfeder                          | 1       |
| 51   | 0500.0010.0 |     | Kurbelwelle                       | 1       |
| 52   | 8111.1100.8 |     | Pendelrollenlager                 | 1       |
| 53   | 8119.2000.4 |     | Lagerträger                       | 1       |
| 54   | 8720.6901.2 | C   | Sicherungsscheibe                 | 1       |
| 55   | 8720.2001.2 |     | Nutmutter                         | 1       |
| 56   | 0634.0058.0 |     | Lagerdeckel                       | 1       |
| 57   | 8010.7700.3 | C   | Schmiernippel                     | 3       |
| 58   | 2500.0002.0 |     | Pleuel, komplett                  | 3       |
| 59   | 2500.0106.0 |     | Führungskolben, komplett          | 3       |
| 60   | 8721.4201.5 | C   | Spannstift                        | 3       |
| 61   | 0710.0006.0 |     | Kreuzkopfbolzen                   | 3       |
| 62   | 8810.8100.0 | C   | Olabdichtring                     | 3       |
| 63   | 8810.1012.7 | C   | O - Ring                          | 3       |
| 64   | 0634.0056.0 |     | Dichtungsdeckel                   | 3       |
| 65   | 2050.0000.0 |     | Spritzscheibe, komplett           | 3       |